

PIN Diode

■ FEATURES

- High power antenna switch
- Very low insertion loss, high isolation
- Low series resistance
- Low diode capacitance
- Surface mountable plastic molded package
- RoHS2 compliant
- Pb free / Halogen free



■ MECHANICAL DATA

- Case : DFN3516-2L package molded plastic
- Terminals : Solderable per MIL-STD-750, method 2026
- Polarity : Indicated by cathode band

■ DESCRIPTION

The L9210F PIN diode is designed for high power antenna switches in two-way radios.

■ ABSOLUTE MAXIMUM RATINGS (Ta=25°C)

SYMBOL	PARAMETER	RATINGS	UNITS
VR	Reverse Voltage	180	V
PD *	Power Dissipation	1	W
TJ	Junction Temperature	150	°C
Tstg	Storage Temperature Range	-55 to 150	°C

*) Mounting on glass epoxy PCB (50mm x 50mm x 1.6mm)

■ ELECTRICAL CHARACTERISTICS (Ta=25°C)

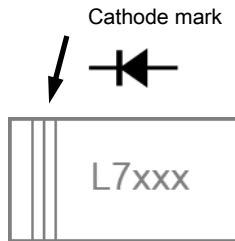
SYMBOL	PARAMETER	CONDITIONS	LIMITS			UNITS
			MIN	TYP	MAX	
IR	Reverse Current	VR=180V	-	-	10	uA
VF	Forward Voltage	IF=50mA	-	-	1.0	V
Ct	Diode Capacitance	VR=40V , f=100MHz	-	-	1.1	pF
Rfs1	Forward Series Resistance1	IF=10mA , f=100MHz	-	0.45	0.7	Ω
Rfs2	Forward Series Resistance2	IF=50mA , f=100MHz	-	0.3	-	Ω
Rp	Parallel Resistance	VR=0V , f=100MHz	1.0	3.0	-	kΩ

L9210F

EK 0506-0010 Ver.E

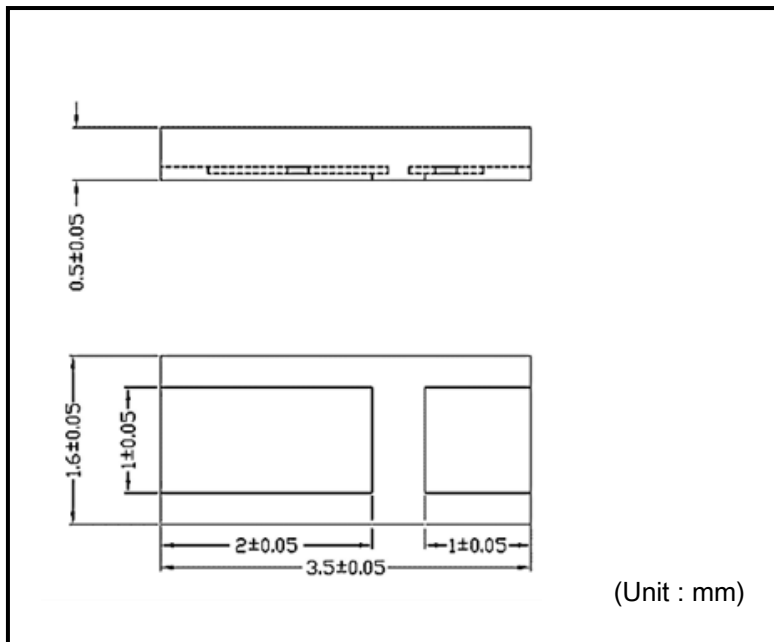
PIN Diode

MARKING

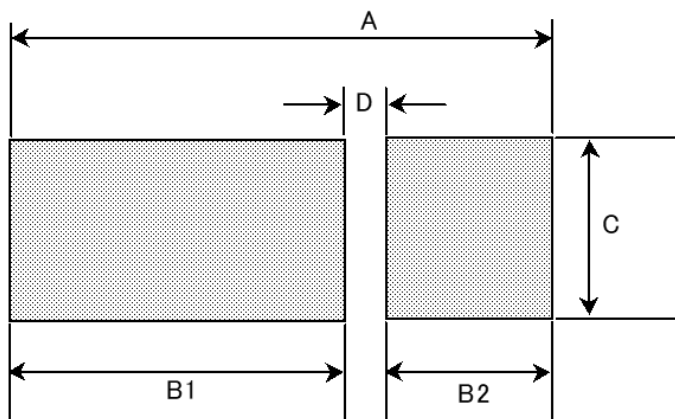


L7 : Parts number L9210F
XXX : Lot code (3 ~ 4digits)

DIMENSIONAL OUTLINE DRAWING



RECOMMENDED LAND PATTERNS



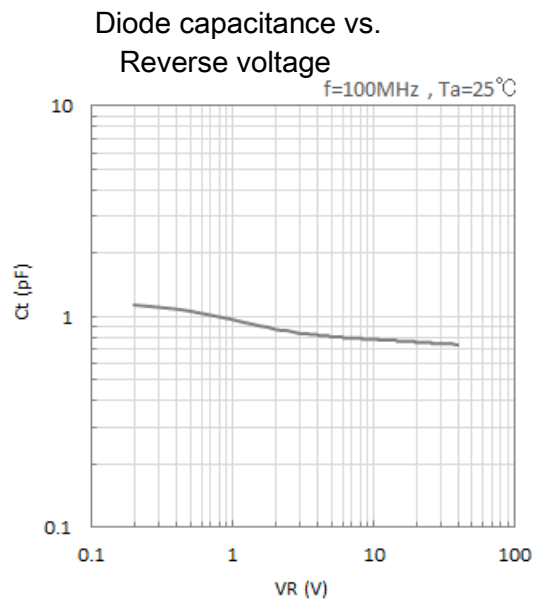
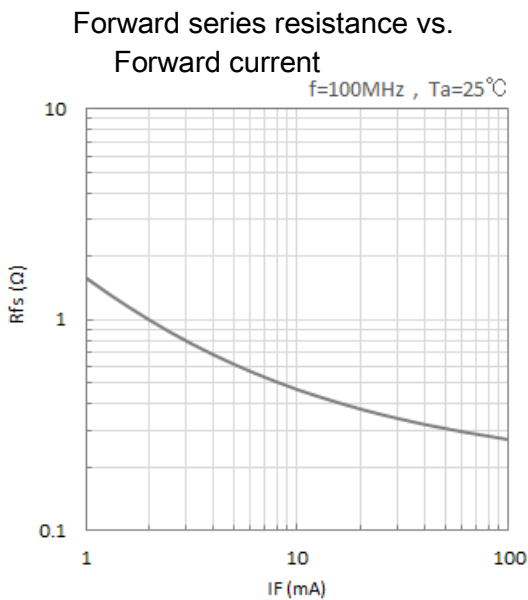
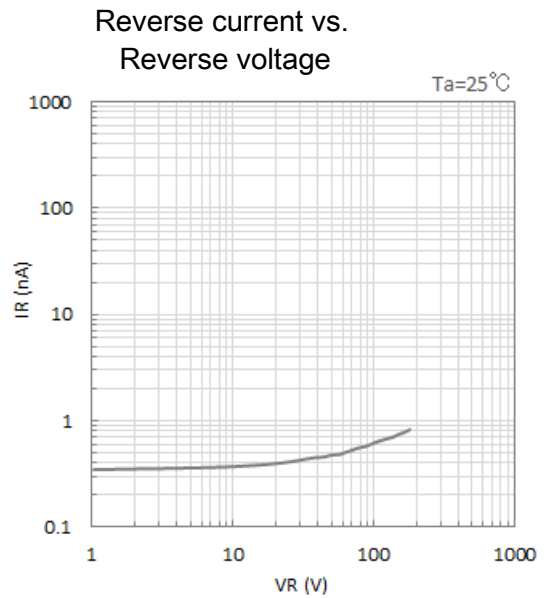
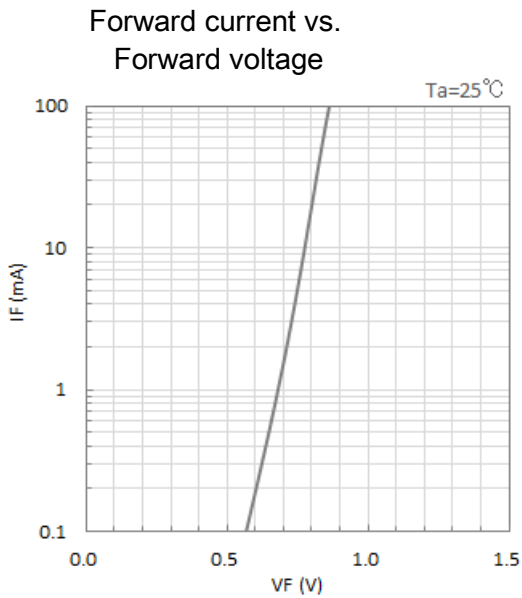
Size	DFN3516-2L
A	3.9
B1	2.3
B2	1.3
C	1.4
D	0.3
unit	mm

L9210F

EK 0506-0010 Ver.E

PIN Diode

■ TYPICAL PERFORMANCE



IMPORTANT NOTICE

Litec Corporation reserves the right to make changes without further notice to any product herein to make corrections, modifications, enhancements, improvements, or other changes.

Litec Corporation does not assume any liability arising out of the application or use of any product described herein;

neither does it convey any license under its patent rights, nor the rights of others.

The user of products in such applications shall assume all risks of such use and will agree to hold Litec Corporation and all the companies whose products are represented on our website, harmless against all damages.

The products located on our website at www.litec-corp.com are not recommended for use in life support systems where a failure or malfunction of the component may directly threaten life or cause injury without the expressed written approval of Litec Corporation.

CONTACT



Litec Corporation

Funakoshi Medical Building, Nakagyo-ku, Kyoto 604-0866, Japan

Phone : 81-75-211-6448 FAX : 81-75-211-6449

URL <https://litec-corp.com/>